

# Completed Projects

**Kent Commercial**

A better way to build

## DFO Maritimes—Dartmouth

### Project Details

16' x 40' 2 Bedroom Bunkhouse

Client:	Department of Fisheries & Oceans
Date of Commencement:	June 2005
Date of Completion	November 2005
Total Dollar Value	\$ 51,000
Project Manager	Matthew Wood
Primary Subcontractors	Interior Plus Pinnacle Marketing
Square Footage	640 sq.ft. total
Total Modules	1 Module

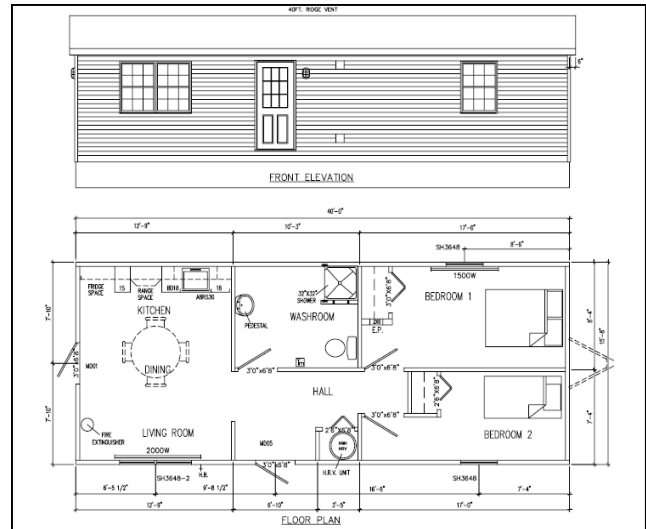
### Scope of Work

The Department of Fisheries and Oceans required the supply, delivery and installation of a bunkhouse facility. This complete two bedroom bunkhouse was to be used for a remote location near Juniper Station. While the client was already confident regarding its floor plan and requirements, Kent Commercial was key in providing cost effective solution. Modular construction provided a completed product that could be dropped in place at a great cost savings compared to conventional construction in a remote site.

### Major Design Build Project Components

Kent Commercial was approached by the client with a tender package for the manufacturing, delivery and installation of a 16' x 40' 2 bedroom bunkhouse.

Kent Commercial researched and chose materials to meet the client's end specifications, working with the client to



clearly outline roles and responsibilities to minimize site works.

Requirements in the floor plans were then confirmed. There was a need to provide living accommodations that would meet all the needs of workers living in an isolated area, while still keep within a small footprint.

Kent Commercial then proceeded with the manufacturing of the 640 sq. ft. bunkhouse. The end result is a single modular unit on a full length wood beams. The exterior is a horizontal vinyl siding - c/w a 4/12 pitched roof—and asphalt shingles. The interior has a gypsum board interior finish c/w MDF trims and casings. The unit has two bedrooms, 3 piece bathroom, and shared living, dining and kitchen space.

The unit was then delivered and installed in the Alder-marsh area near Juniper Station in the late fall of 2005.

### Special points of interest:

- Module is a self contained transportable 2 bedroom bunkhouse.
- Unit was transportable to a remote location where conventional construction would have been cost prohibitive.
- Modular met a quick turnaround time with a complete product.